



Benton County IRM Advisory Committee Meeting



1/13/25



Presentation Agenda

(17 Slides)

Advisory Committee Members

2024 Timeline

Department Employees

Spraying Stats

Spraying Pictures

Seeding Stats

Seeding Pictures

Burning Stats

Burning Pictures

Tree/Brush Work Stats

Tree/Brush Work Pictures

Tree/Brush Work Pictures (Cont.)

Tree Work Before and After Pictures

All Other Projects

Any Other Pictures

My Expectations of This Department

Your Expectations of This Department
and Comments

Advisory Committee Members

- John Frazier Term Ends 12/31/25
Private
- Luke Hennings Term Ends 12/31/27
Private
- Ann Jorgensen Term Ends 12/31/27
Private
- Zach Parmater Term Ends 12/31/26
Private
- Jeffrey Ralston Term Ends 12/31/27
Private
- Jeff Schadle Term Ends 12/31/26
Private
- Tracy Seeman Term Ends 12/31/27
Board Liaison
- Wayne Siela Term Ends 12/31/26
Public
- Becky VanWey Term Ends 12/31/27
Public

2024 Timeline

- April 1st- Eric's first day
- April 23rd- Conducted Interviews for Techs
- May 6th- Ethan Hennings first day
- May 10th – First day spraying roadsides with truck
- May 20th- Brock Leaders first day
- June 26th- Ethan and Brock obtained CDL's
- September 27th – Last day spraying roadsides
- October 2nd-4th – Roadside Conference
- October 7th – Started trimming trees and brush at intersections for visibility
- October 15th- Weed Commissioners Report to BOS
- November 15th – Started burning intermittently for the next month when weather was right
- December 19th – Hydroseeded for rest of month

Employees

Ethan Hennings (Roadside Tech II)

- Hawkeye Community College - Associates Degree in Natural Resources Management and Policy (2024)

Brock Leaders (Roadside Tech I)

- University of Iowa - Bachelor's Degree in Environmental Policy and Planning

Eric Schares (Roadside Manager/Weed Commissioner)

- Hawkeye Community College - Associates Degree in Horticultural Science (2008)
- ISA Certified Arborist (2021)
- Roadside Manager for the City of Waverly (2018-2024)



Spraying Stats

ROW Spraying from truck

- 65 days a spray truck went out
33 of those days we had two trucks going
- All 243 miles of hard surface roads sprayed X2 for both sides
Resprayed anywhere from 10%-20% of areas that showed persistent weeds
- 1,249 miles of gravel/dirt roads X2 for both sides = 2,498 miles
2,100 of these miles got sprayed for just over 84% and I'd be willing to bet that percentage is actually higher

Hand Spraying

- 33 bridges and guardrails sprayed with nonselective and preemergent
- Spot sprayed Japanese Knotweed 10 different times to keep it in check
- Chemically trimmed around Weed Office, Secondary Roads, Sheriff's Office, Etc.

Spraying Pictures



Seeding Stats

Seeding Completed in 2024

- 9.5 Acres hydroseeded in spring
1.2 of this was hand seeded between Belle Plaine and Luzerne
- 4.4 Acres hydroseeded late fall

Future Plantings

- 17.7 Acres has 2 apps of non selective herbicide on it. We will burn off the dead grass in the spring, follow up with 1 more app of non selective herbicide and then begin seeding these areas.
- Areas were selected based on being highly visible, areas where Phragmites and Scouring Rush were growing, and landowner requests.

Seeding Pictures



Burning Stats

- Most of fall was very wet limiting our burnings until December
- Still managed to get 17.8 acres of established veg. burned
 - +Burned an additional 1.8 acres of seed prep area by Wildcat
- Expect to be able to burn spring and fall in the future

Burning Pictures



Tree/Brush Work Stats

- Ethan and Brock checked every intersection in the county and removed brush for visibility as needed (Smaller Scale)
- Assisted secondary trimming low over hanging trees with the bucket truck and clearing larger trees at intersections (Larger Scale)
- Assisted Conservation clearing trees overhanging Hannen Park roads with bucket truck

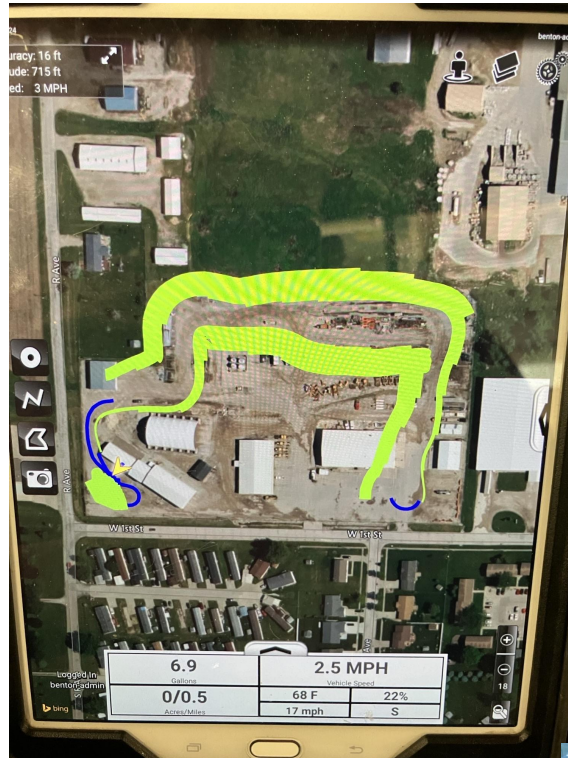
Tree/Brush Removal Pictures









All other projects



Social Media



bentoncountyirm   

What's new?
 

27 posts 23 followers 0 following

Benton County IRM
Promoting native vegetation while combating invasive species in the 5,184 acres of county Right of Way

www.bentoncountya.gov/integrated_road...

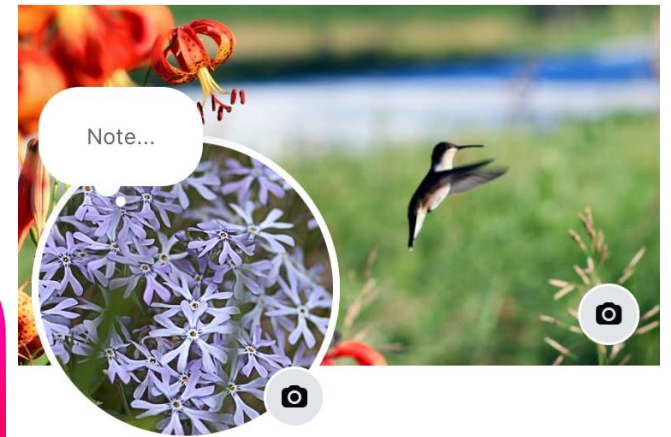
Professional dashboard
New tools are now available.

Edit profile

Share profile



< Benton County I... 9+   



Benton County Integrated Roadside Management

57 likes • 73 followers



Benton County is the 11th largest county by land area in Iowa. The IRM Department is tasked with maintaining the 5,184 Acres of ROW along the County's 1,249 miles of roadways. This is done through suppressing invasive species and promoting native species.



What I currently view as the expectations of the IRM Department

- Spot spray 100% of all county roads including 243 miles of hard surface and 1,249 miles of gravel (Retreat as needed)
- Seed 20-40 acres of ROW with native plants
 - +Using Brome only when needed in areas that need immediate veg. establishment
 - +This is a combination of areas we choose to establish, ditch cleanouts, and field driveway/new road construction
- Spend a majority of December-February cutting trees and woody veg. growing in the ROW
- Get areas that established native plantings and remnant prairies on a 2-5 year burning rotation
 - +Burn 20-40 acres of ROW a year
- Keep up on Weed Commissioner Duties
- Help Conservation with community outreach when possible

Questions, Comments, Other Expectations?

Conversation Starters

- . How many times a year should we meet?
- . How many employees do you think we should have?
- . Should we spray more? Less?
- . Projects you would like to see?
- . Are we doing enough outreach?